



**Tubular Specialties Manufacturing, Inc.**

13011 South Spring Street, Los Angeles, CA 90061-1685  
 Phone 800/CALL TSM (800/225-5876) or 310/515-4801  
 www.GrabBar.com • Fax 310/217-0653

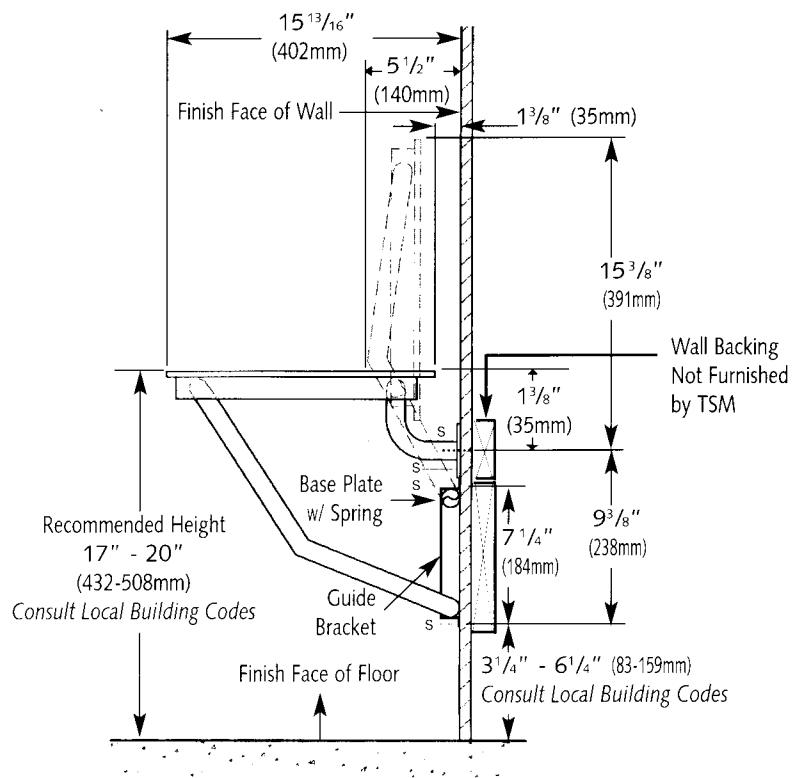
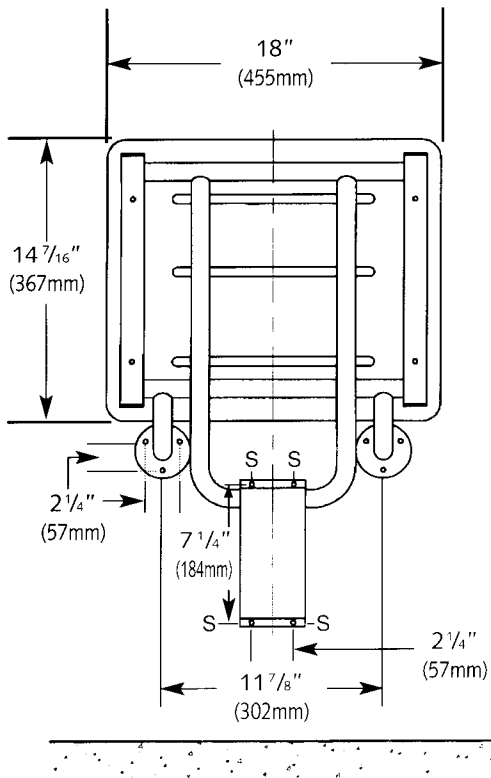
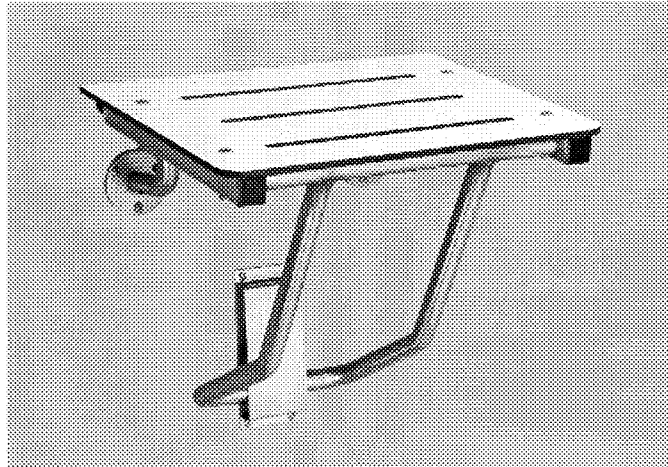
**735-PHI2**

**Technical Data**

Revised June 2005

Page 1 of 2

**Shower/Dressing Area Seat  
 One-Piece Ivory Phenolic Top**



© 2005, Tubular Specialties Mfg., Inc. All Rights Reserved

Manufacturer reserves the right to alter design or dimensions without formal notice and without incurring obligation.



The TSM 735-PHI2 Shower Seat is guaranteed against defects in workmanship and material for one year from shipping date.



## Design Considerations

- The 735-PHI2 seat frame is mechanically assembled and there is no counterbalance mechanism to offer resistance when the seat is lowered.
- Grab bars should be specified in conjunction with all shower seats.
- Phenolic is a high pressure laminate which is sturdy and easy to clean. The surface is easier for most people to slide across because it is hard and smoother than naugahyde. In addition, the holes provide convenient drainage. Phenolic requires little or no maintenance other than regular cleaning.
- In-wall backing is required for every shower seat installation; consult local codes to assure compliance.
- All shower seats should be inspected periodically to assure fasteners are secure.
- The 735-PHI2 will support 250 pounds of static load (1112 N) when correctly installed, complying with barrier-free accessibility guidelines (including ADAAG in U.S.A.).



## Model Numbers

- 735-PHI2, RH . . .One-Piece Ivory Phenolic Top, Right Hand
- 735-PHI2, LH . . .One-Piece Ivory Phenolic Top, Left Hand



## Operation

The guide bracket supports U-shaped legs which move up and down, allowing the seat to be lowered into position or raised to be folded parallel to the wall when not in use.

The spring at the top of the base plate holds the seat in an upright position. When seat is pulled down, legs are released from the spring and the seat folds down into sitting position.



## Suggested Architectural Specification

TSM Model 735-PHI2 Shower/Dressing Area Seat frame shall be stainless steel satin finish type 304 (18-8) 1 $\frac{1}{4}$ " x 18 gauge square tubing (32x1.2mm) and 1" x 18 gauge round tubing (25x1.2mm). Flanges shall be stainless steel satin finish type 304 (18-8) 8 gauge round 3" (4.2x76mm) diameter with three  $\frac{1}{4}$ " (6mm) mounting holes. Guide bracket for legs shall be all stainless steel type 304 (18-8); spring 24 gauge (0.6mm) shall be spot welded to heavy gauge base plate; guide bracket shall be 16 gauge (1.6mm) formed construction

with four  $\frac{1}{4}$ " (6mm) mounting holes. Seat shall be one-piece ivory phenolic top  $\frac{1}{2}$ " thick (13mm); can lock in upright position when not in use. Seat shall comply with barrier-free accessibility guidelines (including ADAAG in U.S.A.).

**Shower/Dressing Area Seat shall be Model 735-PHI2 as manufactured by Tubular Specialties Manufacturing, 13011 South Spring Street, Los Angeles, California 90061, tel 800-Grab Bar.**



## Materials/Workmanship

<b>Phenolic Top</b>	Solidly fused plastic laminate $\frac{1}{2}$ " thick (13mm) with matte-finish melamine surfaces, ivory or woodgrain colored face sheets and black phenolic resin core, integrally bonded (cannot be delaminated). Bolted to frame with countersunk stainless steel machine screws and cap nuts.
<b>Frame</b>	Stainless steel tubing type 304 (18-8) 1 $\frac{1}{4}$ " x 16 gauge (32x1.5mm) square and 1" x 18 gauge (25x1.2mm) round with #4 satin finish.
<b>Mounting Flanges (2)</b>	Stainless steel type 304 (18-8) 8 gauge round 3" (4.2x76mm) diameter. Underslung supports of 1" x 12 gauge (32x2.7mm) sleeves 1 $\frac{1}{2}$ " (38mm) in length at top. Flanges have three $\frac{1}{4}$ " (6mm) mounting holes.
<b>Base Plate</b>	Stainless steel heavy gauge type 304 (18-8).
<b>Spring</b>	Stainless steel 24 gauge (0.6mm) type 304 (18-8), spot welded to base plate.
<b>Guide Bracket</b>	Stainless steel 16 gauge (1.6mm) type 304 (18-8) satin finish, formed construction with four $\frac{1}{4}$ " (6mm) mounting holes.



## Installation

1. The 735-PHI2 is manufactured to hold 250 pounds (1112 N), but it is only as strong as the wall it is mounted on.
2. In-wall backing is required. If the shower is prefabricated, secure and appropriate backing must be provided by the shower stall manufacturer.
3. Seat is surface mounted to wall through in-wall backing with two mounting flanges at top and guide bracket below. While local codes must be complied with in mounting seat, the recommended seat height is 18" (457mm) above floor level. The template that is supplied with each seat will allow you to mount the seat at that height with mounting holes from finished floor at 3 $\frac{3}{4}$ " & 10" for guide bracket and 12" & 13 $\frac{5}{8}$ " for flanges.
4. The horizontal section of the U-shaped legs must be positioned in-between the base plate and cover guide bracket before seat is secured to wall.
5. It is the installer's responsibility to select fasteners that are appropriate for the wall condition and application; TSM does not include fasteners with shower or tub seats.

