



## Tubular Specialties Manufacturing, Inc.

13011 South Spring Street, Los Angeles, CA 90061-1685

Phone 800/Grab Bar (800/472-2227) or 310/515-4801

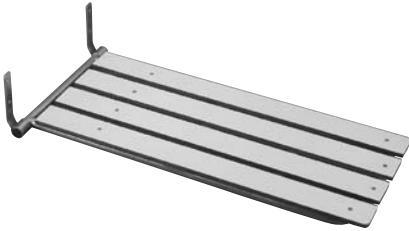
www.GrabBar.com • Fax 310/217-0653

# 750-PH, 750-PHI

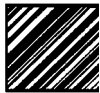
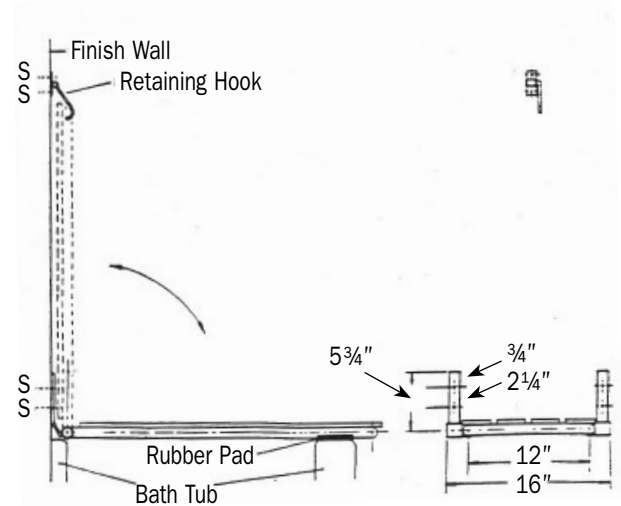
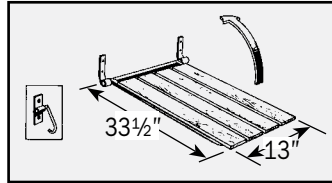
### Technical Data

Revised January 2008

## Fold-Up Bathtub Seat Phenolic Slats



Shown with Ivory Slats, Model 750-PHI



### Model Numbers

- 750-PH Woodgrain Phenolic Slats
- 750-PHI Ivory Phenolic Slats



### Specification

Fold-Up Bathtub Seat frame shall be stainless steel satin finish type 304 (18-8). Tubing shall be 1" x 18 gauge (25 x 1.2mm), two (2) mounting brackets shall be 1" x 8 gauge straps (25 x 4.2mm) welded to 1 1/4" x 12 gauge sleeve tubing (32 x 2.8mm), and formed retainer hook shall be 1/4" (6mm) diameter solid rod. Structural assembly shall be of welded construction and all exposed edges and corners shall be radiused and deburred. Phenolic top shall be solidly-fused plastic laminate 1/2" thick (13mm) with matte-finish melamine surface, [woodgrain] [ivory]

colored face sheet and integrally bonded black phenolic resin core. Top shall be bolted to frame with countersunk stainless steel machine screws and cap nuts. Two rubber sleeves with epoxy kits shall be provided to affix sleeves on the frame at the proper location at the time of installation.

**Fold-Up Bathtub Seat shall be Model [750-PH] [750-PHI] as manufactured by Tubular Specialties Manufacturing, 13011 South Spring Street, Los Angeles, California 90061, tel 800-Grab Bar.**



### Operation

Wall brackets hold the seat in place over the bathtub, allowing the seat to rotate freely up and down from a fixed position. The outside lip of the bathtub supports the seat when it is lowered

to the sitting position (rubber sleeves on the seat frame buffer the tub from the frame). A manually operated retaining hook mounted on the wall holds the seat in place when it is folded up against the wall.



### Installation

1. Seat is surface mounted to wall at locations marked by a "S" through in-wall backing provided by installer/contractor prior to wall finishing. If the shower is prefabricated, secure and appropriate backing must be provided by the shower stall manufacturer.
2. It is the installer's responsibility to select fasteners that are appropriate for the wall condition and application. TSM does not include fasteners with shower or tub seats.
3. Surface mount the two brackets to the wall, using a level to ensure that the seat lies flat when opened.
4. Attach rubber sleeves (provided) with epoxy (provided) at the proper location where the frame meets the tub.
5. The 750-PH is manufactured to hold 250 pounds (113.5Kg), but it is only as strong as the wall and bathtub upon which it is mounted.
6. Accessories should be inspected periodically to make sure their attachment to the wall is not loosening.



TSM 750-PH, 750-PHI Fold-Up Bathtub Seat is guaranteed against defects in workmanship and material for one year from shipping date.