



Since 1966

Tubular Specialties Manufacturing, Inc.

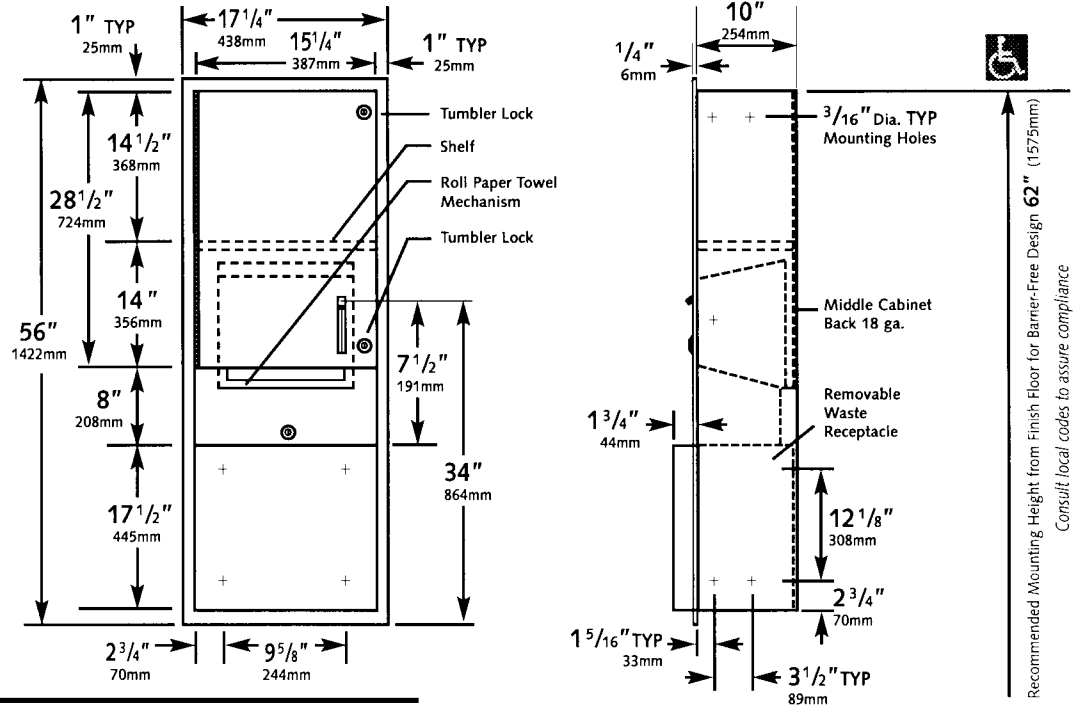
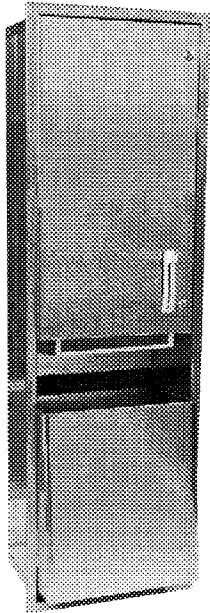
13011 South Spring Street, Los Angeles, CA 90061-1685
Phone 800/Grab Bar (800/472-2227) or 310/515-4801
www.GrabBar.com • Fax 310/217-0653

5210-H-15

Recessed Roll Paper Towel Dispenser & Waste Receptacle

Technical Data

Revised May 2005



Operation

Towels are fed by lever action until supply is depleted. Building operator adjusts towel feed length with pin supplied by manufacturer. Unit may be reloaded with a full roll to automatically start when finished with an existing partial roll.



Specification

Recessed Roll Paper Towel Dispenser and Waste Receptacle shall hold and dispense one 8" or 9" wide standard towel roll up to 800 ft. (244m) long and one stub roll up to 4" (102mm) diameter. Waste capacity shall be 15 gallons (56.8 liters). Unit frame, waste container and cabinet shall be fabricated of type 304 satin finish stainless steel alloy 18-8, 22 gauge (.7mm); towel dispenser door shall be same grade 18 gauge (1.2mm); unit back plate for mechanism shall be fabricated of 18 gauge. Towel dispensing slot shall have smooth and burr-free edges for snag-free dispensing.

Door shall be secured to cabinet with full-length, welded 3/16" (5mm) dia. stainless steel multi-staked piano hinge and be held closed with a tumbler lock keyed alike to other TSM washroom accessories. Waste container shall have hemmed edges for safety and shall be retained by a tumbler lock keyed alike to other TSM washroom accessories. Structural assembly of all components shall be of welded construction and flange shall be drawn, one-piece construction.



Materials/Workmanship

Recessed Roll Paper Towel Dispenser and Waste Receptacle shall be Model 5210-H-15 as manufactured by Tubular Specialties Manufacturing, 13011 South Spring Street, Los Angeles, California 90061, tel (800)Grab Bar.

Cabinet	Stainless steel type 304 (18-8) 22 gauge satin finish (0.8mm). Flange is drawn, one-piece seamless construction with no mitered corners.
Door	Stainless steel type 304 (18-8) 18 gauge satin finish (1.2mm) with double panel construction and fiberboard filler. Full-length welded 3/16" (5mm) dia. stainless steel piano hinge. Pin tumbler lock is keyed like other TSM accessories.
Roll Paper Towel Dispenser	Enamel finish cold-rolled steel. Slot is smooth and burr-free. Dispenses one 8" or 9" wide (203 or 229mm) standard towel roll up to 800 ft. (244m) long and one stub roll up to 4" (102mm) diameter.
Waste Receptacle	Stainless steel type 304 (18-8) 22 gauge satin finish 15 gallon (56.8 L) capacity. Secures to cabinet with pin tumbler lock centered on door and keyed like other TSM accessories.



Installation

1. Recommended mounting height from finish floor to top of cabinet is 62" (1575mm) for barrier-free design. Consult local codes to assure compliance.
2. Provide framed wall opening 15 3/4" wide x 54 1/2" high (400x1384mm) with a minimum recessed depth from finish face of wall of 10 1/4" (260mm). Note that top of RWO is 3/4" (19mm) below top of unit.
3. Position unit to avoid pipes, vents and conduits previously installed in wall.
4. After installing shims as required to give a solid base, use #10 self tapping screws supplied by manufacturer through concealed mounting holes provided.

Manufacturer reserves the right to alter design or dimensions without formal notice and without incurring obligation.

© 2005, Tubular Specialties Mfg., Inc. All Rights Reserved



Guarantee

TSM 5210-H-15 Recessed Roll Paper Towel Dispenser & Waste Disposal is guaranteed against defects in workmanship and material for one year from shipping date.