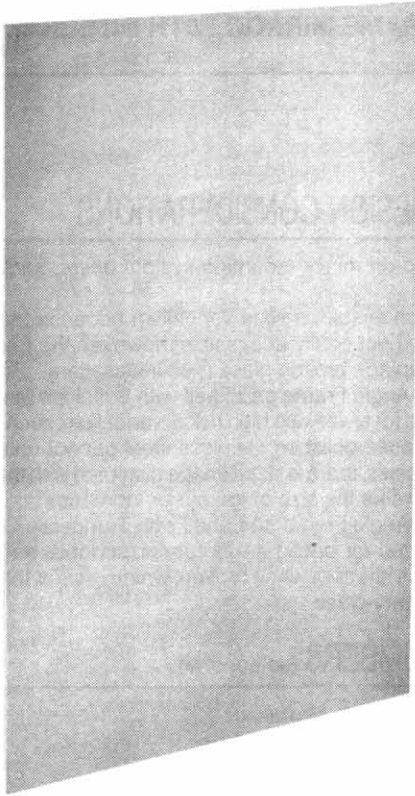


TSM

TUBULAR SPECIALTIES MFG., INC.

13011 S. SPRING ST., LOS ANGELES, CA 90061-1685 • 213/515-4801 TOLL FREE 800/421-2961 CA ONLY 800/521-7548
DESIGNER SERVICE: 7:00 A.M. TO 5:00 P.M. PACIFIC TIME • TELEX II: 910-346-6362 • FAX: 213/217-0653

M-7



FRAMELESS STAINLESS STEEL MIRROR



DESIGN CONSIDERATIONS

- The M-7 Frameless Stainless Steel Mirror is recommended for areas with high risk of vandalism, such as prisons; however, because polished stainless steel cannot reflect images as sharply as glass, there is slight image distortion with these mirrors (which increases proportionately with the mirror size).



SUGGESTED ARCHITECTURAL SPECIFICATION

TSM model M-7 Frameless Stainless Steel Mirror from Tubular Specialties Manufacturing, Inc., Los Angeles, California, (213) 515-4801. Mirror: stainless steel Type 430 18 gauge (1.2mm). Finish: #8 bright polish. Dimensions: _____ (fill in size) wide x _____ (fill in size) high. Screw Holes: drilled at _____ (fill in location). Installation Hardware: one-way stainless steel screws.



MATERIALS/WORKMANSHIP

Mirror—Stainless steel Type 430 18 gauge (1.2mm) with #8 bright polished finish. Protected during shipment with PVC covering. Holes are drilled at locations requested by specifier and one-way stainless steel screws are provided by manufacturer. Custom cut to size; maximum dimensions available are 140" (3556mm) x 36" (914mm).



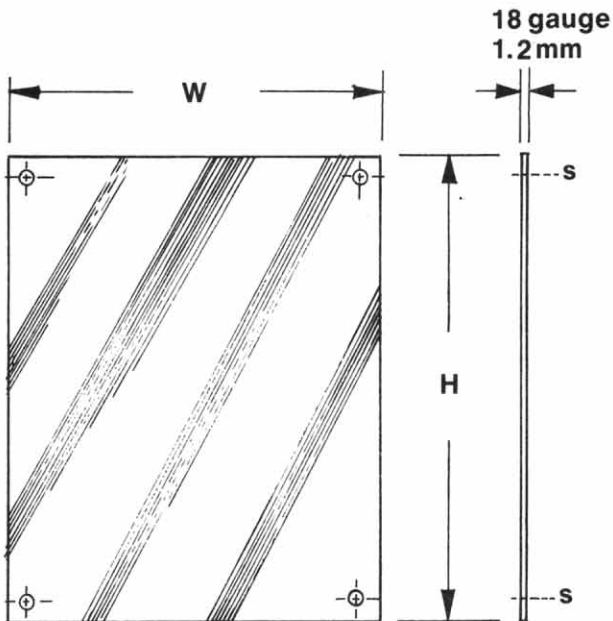
INSTALLATION

Mirror is surface mounted. Vandal-resistant screws are provided by manufacturer (see Installation, Reference Section C, for various applications).



DISTRIBUTION

TSM maintains a worldwide network of distributors. Call your sales representative listed in Reference Section O for the names of those nearest you.



GUARANTEED PRODUCT

SEE PAGE 3 FOR COMPLETE DETAILS