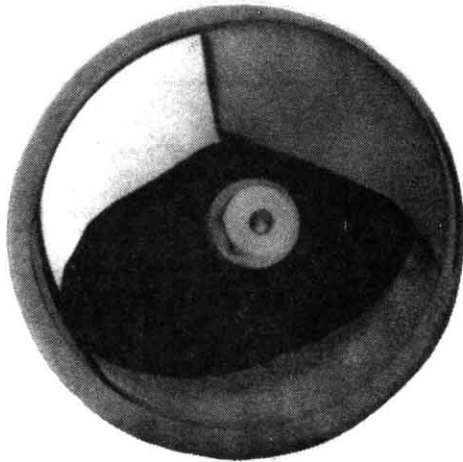


# TSM

TUBULAR SPECIALTIES MFG., INC.

13011 S. SPRING ST., LOS ANGELES, CA 90061-1685 • 213/515-4801 TOLL FREE 800/421-2961 CA ONLY 800/521-7548  
DESIGNER SERVICE: 7:00 A.M. TO 5:00 P.M. PACIFIC TIME • TELEX II: 910-346-6362 • FAX: 213/217-0653

# 871



## RETRACTABLE CLOTHES LINE



### FINISH (select one)

- #8 Bright (standard)
- Other (additional charge; see Finish Schedule, Reference Section A, for options)



### OPERATION

Pull out clothes line and insert end of cord into retainer plate on opposite wall. Turn locking knob on unit clockwise to keep cord taut when in use. Cord retracts by spring-actuated reel when locking knob is turned counter-clockwise and clothes line is removed from retainer plate.



### SUGGESTED ARCHITECTURAL SPECIFICATION

TSM model 871 Retractable Clothes Line from Tubular Specialties Manufacturing, Inc., Los Angeles, California, (213) 515-4801. Cover: stainless steel Type 304 (18-8) 20 gauge (0.9mm). Finish: \_\_\_\_\_ (select from Finish Schedule). Clothes Line: 8' (2438mm) nylon, retracted by spring-actuated reel. Center locking knob allows cord to remain taut at any distance up to 8' (2438mm). Manufacturer's name is not shown on any exposed surface.



### MATERIALS/WORKMANSHIP

**Cover**—Stainless steel Type 304 (18-8) 20 gauge with drawn, one-piece construction.

**Retainer Wall Plate**—16 gauge (1.5mm) treated steel.

**Clothes Line**—8' (2438mm) nylon.

**Spring**—1/4" (6mm) spring steel.

**Reel**—Molded high impact plastic.

**Gasket**—Nylon disk.



### INSTALLATION

Surface mount above bathing area for water drainage from wet garments. Sandwich round gasket between finish wall and mounting bracket to prevent damage to wall. Attach mounting bracket to wall in vertical position, set screw hole at 12 o'clock. Sandwich oval gasket between retainer plate and finish wall on opposite wall so that top of retainer plate is the same height as the top of the mounting bracket; this ensures that the cord will be level. Secure unit to mounting bracket with set screw provided. Screws are provided by manufacturer (see Installation, Reference Section C, for various applications).

