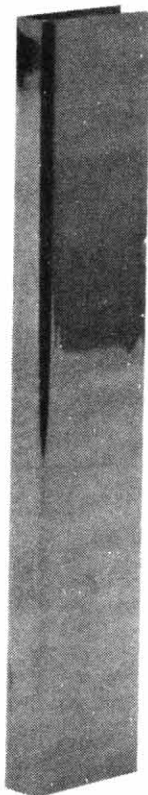


TSM

TUBULAR SPECIALTIES MFG., INC.

13011 S. SPRING ST., LOS ANGELES, CA 90061-1685 • 213/515-4801 TOLL FREE 800/421-2961 CA ONLY 800/521-7548
 DESIGNER SERVICE: 7:00 A.M. TO 5:00 P.M. PACIFIC TIME • TELEX II: 910-346-6362 • FAX: 213/217-0653

445,446



BRASS GLASS CHANNEL AND CLIP



DESIGN CONSIDERATIONS

- Brass Glass Channel and Clip are used to frame glass panels with brass tubing. Applications include salad bar sneeze guards and booth privacy panels.
- Usually one or the other is specified for a project, but they can also be combined.
- Other than their different appearances, the main difference between the two is their method of installation; channel is more complicated (see Installation).
- The natural beauty of the bright brass finish is maintained by regular, frequent cleaning and polishing. For strictly decorative applications or where access for cleaning isn't possible, clear coating is available as an option to prevent oxidation of the finish. However, the clear coating will lose its effectiveness if it becomes scratched. For further information, see Care of Metal Finishes, Reference Section B.
- TSM recommends that brass handrail work be specified in a separate subsection of Division 5, "Metals," to ensure competent and competitive bids from experienced railing suppliers.

MODEL NUMBERS

- BT-445**—Glass Channel (accommodates any size tubing)
- BH-446**—Glass Clip for 1-1/2" (38mm) tubing
- BT-446**—Glass Clip for 2" (51mm) tubing

FINISH (select one)

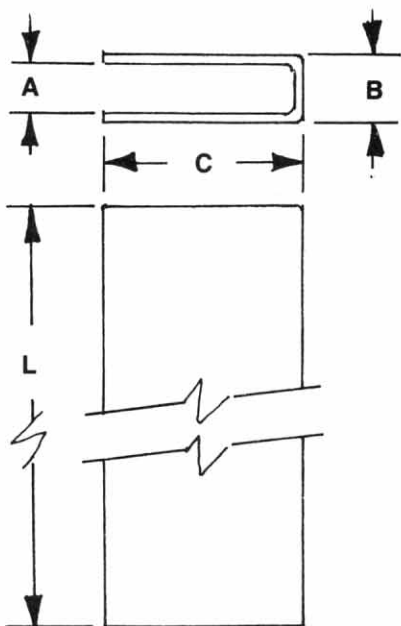
- Uncoated Bright Brass (standard)
- Other (additional charge; see Finish Schedule, Reference Section A, for options)



SUGGESTED ARCHITECTURAL SPECIFICATION

TSM model(s) _____ (445 Brass Glass Channel and/or 446 Brass Glass Clip) from Tubular Specialties Manufacturing, Inc., Los Angeles, California, (213) 515-4801. Channel: brass, formed construction; accommodates 1/4" (6mm) thick glass (not provided by the manufacturer). Clip: brass, two-piece cast construction; attached to tubing with removable panel which tightens against glass; accommodates 1/4" (6mm) thick glass (not provided by manufacturer). Size: for _____ (1-1/2" [38mm] or 2" [51mm]) O.D. tubing. Finish: _____ (select from Finish Schedule). Installation Hardware: 1/4" (6mm) x 8/32 (6mm) pan head brass machine screws.

Glass Channel

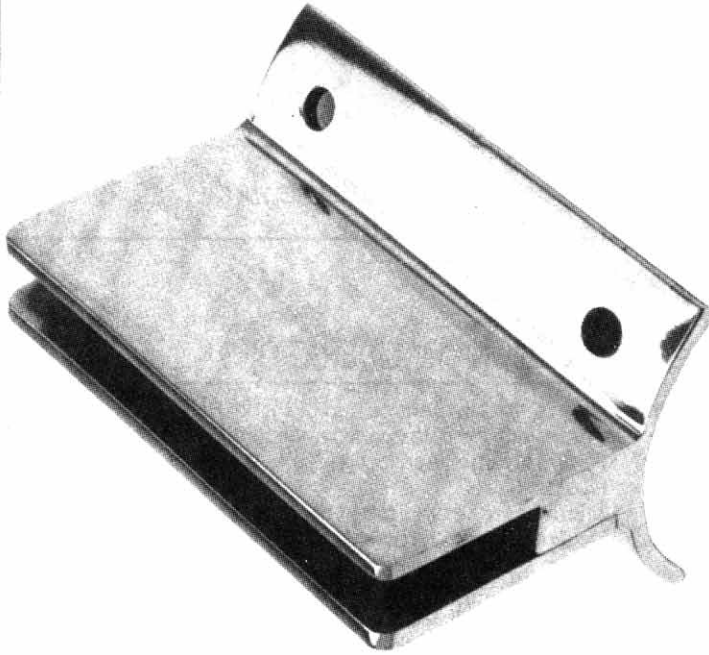


	A	B	C
BT-445	1/4" 6mm	3/8" 10mm	1" 25mm



GUARANTEED PRODUCT

SEE PAGE 3 FOR COMPLETE DETAILS



MATERIAL/WORKMANSHIP

Channel—Brass (copper alloy—approximately 60% copper and 40% zinc), formed construction. Channel can fit any size tubing; accommodates glass 1/4" (6mm) thick.

Clip—Brass (see Channel), two-piece cast construction. Attaches to tubing and removable panel tightens against glass. Accommodates glass 1/4" (6mm) thick and 1-1/2" (38mm) or 2" (51mm) O.D. tubing.



INSTALLATION

There are two methods for attaching brass channel:

TSM recommends that glass channel be attached in the field with set screws. Drill holes through the tubing and channel approximately every 12" (305mm), then tap all tubing holes where the channel is to be attached. (The Drill and Tap Set, TSM model BDT, contains a #29 bit and 8/32 tap for this purpose.) NOTE: Do not tap the channel, or it will not be possible to tighten the tubing and channel together. Tap the tubing only. Align the channel and tubing holes and insert set screws provided by manufacturer. Do NOT overtighten or the threads in the tubing will strip.

The second method for attaching glass channel is to instruct the factory to weld the channel to the tubing. This is more costly than set screws and requires precise drawings detailing where the channel is to be attached. TSM welds the channel to the tubing approximately every 12" (305mm) on both sides.

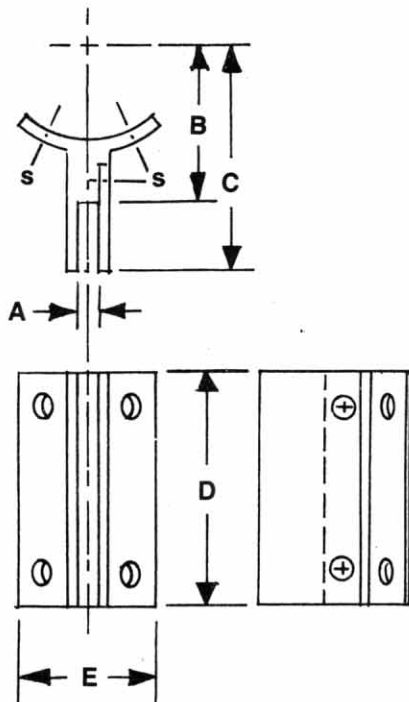
To install wall clip, secure to tubing using four 1/4" (6mm) x 8/32 pan head brass machine screws (provided by manufacturer). Remove side panel of clip, insert glass and tighten panel to hold glass securely.



DISTRIBUTION

TSM maintains a worldwide network of distributors. Call your sales representative listed in Reference Section O for the names of those nearest you.

Glass Clip



	A	B	C	D	E
BH-446	1/4"	1 3/8"	2 1/8"	2 5/8"	1 1/4"
1 1/2"	6mm	35mm	54mm	67mm	32mm
BT-446	1/4"	1 5/8"	2 3/8"	2 5/8"	1 1/2"
2"	6mm	41mm	61mm	67mm	38mm