

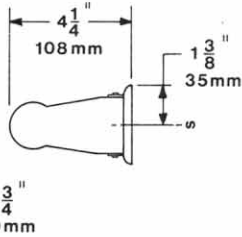
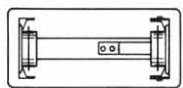
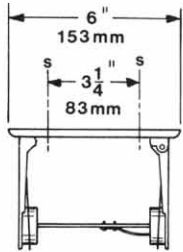
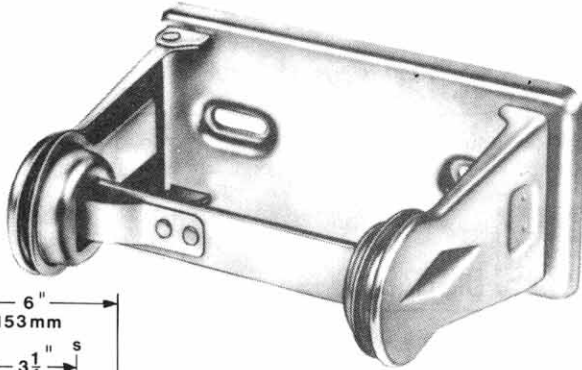
TSM

TUBULAR SPECIALTIES MFG., INC.

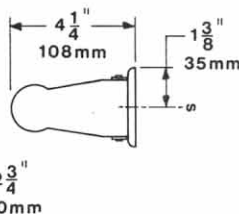
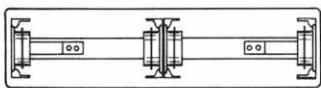
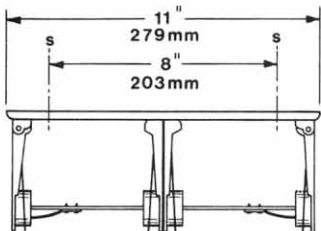
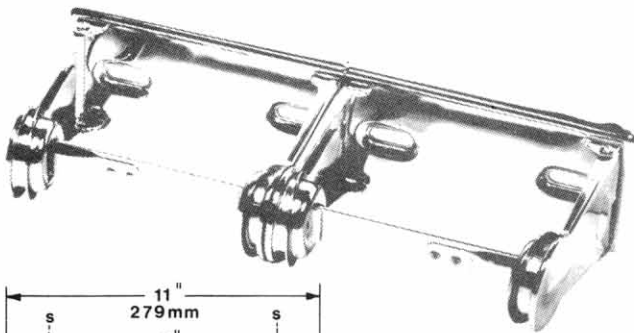
13011 S. SPRING ST., LOS ANGELES, CA 90061-1685 • 213/515-4801 TOLL FREE 800/421-2961 CA ONLY 800/521-7548
DESIGNER SERVICE: 7:00 A.M. TO 5:00 P.M. PACIFIC TIME • TELEX II: 910-346-6362 • FAX: 213/217-0653

372,373

Model # 372 Single Toilet Tissue Holder



Model # 373 Double Toilet Tissue Holder



TOILET TISSUE HOLDERS



DESIGN CONSIDERATIONS

- The 372 and 373 are the most economical commercial toilet tissue dispensers in the TSM line.

MODEL NUMBERS (select one)

- 372—Single Roll
- 373—Double Roll



FINISH (select one)

- Chrome Plated (standard)
- Other (additional charge; see Finish Schedule, Reference Section A, for options)



OPERATION

Adjustable tension springs prevent toilet roll from rotating freely. To replace toilet roll, press spring lock retaining clip, releasing side arm.



SUGGESTED ARCHITECTURAL SPECIFICATION

TSM model _____ (372 Single or 373 Double) Toilet Tissue Holder from Tubular Specialties Manufacturing, Inc., Los Angeles, California, (213) 515-4801. Construction: steel 18 gauge (1.2mm). Finish: _____ (select from Finish Schedule). Operation: heavy duty springs control delivery of toilet tissue. Capacity: accommodates _____ (one or two) roll(s) up to 4-1/2" (114mm) in diameter. Manufacturer's name is not shown on any exposed surface.



MATERIALS/WORKMANSHIP

Dispenser—Steel 18 gauge (1.2mm). Components are die stamped and assembled with pop rivets and spot welding to form a single structural unit. Capacity: 372 holds one standard toilet tissue roll up to 4-1/2" (114mm) in diameter; 373 holds two.



INSTALLATION

Holder is surface mounted. Screws are provided by manufacturer (see Installation, Reference Section C, for various applications).