



Tubular Specialties Manufacturing, Inc.

13011 South Spring Street, Los Angeles, CA 90061-1685

Phone 800/Grab Bar (800/472-2227) or 310/515-4801

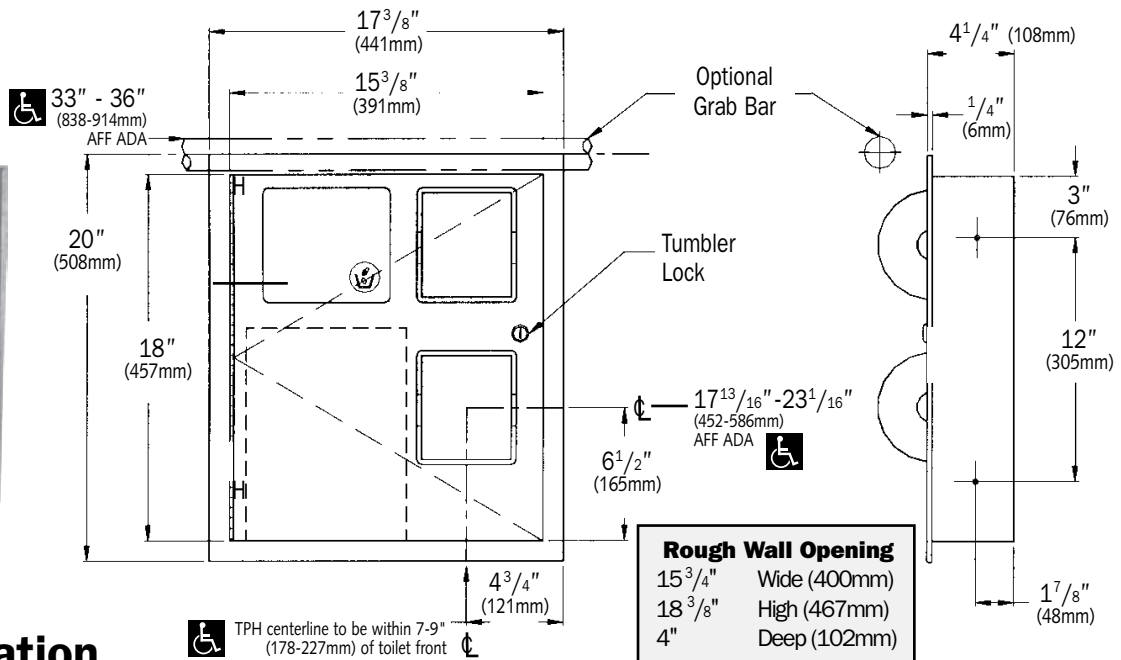
www.GrabBar.com • Fax 310/217-0653

5367

Recessed Toilet Paper Dispenser & Napkin Disposal

Technical Data

Revised September 2007



Specification

Recessed Toilet Paper Dispenser and Napkin Disposal shall hold and dispense two rolls standard or 1800 sheet $4\frac{1}{2}'' \times 5\frac{1}{4}''$ (114mm x 133mm) toilet paper. Removable waste container shall have a capacity of 1.3 gal (4.9 liters) or 300 in³ (.005 m³). Toilet paper dispenser door and waste disposal door shall be fabricated of alloy 18-8 stainless steel, type 304, 18 gauge; face frame and cabinet shall be 22 gauge. All exposed surfaces shall have No. 4 satin finish and be protected by plastic PVC film easily removed after installation. Disposal door shall be hung on spring-tensioned hinges and shall have international graphic waste disposal symbol. Toilet paper dispenser/disposal door shall be attached to cabinet at side with a full-length $\frac{3}{16}''$

(5mm) dia. stainless steel multi-staked piano hinge and shall be held closed with a tumbler lock keyed alike to other TSM Washroom Equipment. Face trim shall be 1" (25mm) wide formed from one piece with no mitres, welding or open seams and have $\frac{1}{4}''$ (6mm) square return to face of wall. Structural assembly of all components shall be of welded construction. Cabinet shall include theft- and vandal-resistant rollers that shall be of molded high-impact resistant plastic with integral molded-in stainless steel endpins and two (2) rollers shall be supplied.

Recessed Toilet Paper Dispenser and Napkin Disposal shall be Model 5367 as manufactured by Tubular Specialties Manufacturing, 13011 South Spring Street, Los Angeles, California 90061, tel 800-Grab Bar.

Operation

Toilet paper rolls feed freely until depleted; level of supply is constantly visible for low level warning. Push self-closing disposal door to deposit waste material. Waste receptacle is emptied manually on cycle determined by maintenance needs.

Toilet paper rolls and waste receptacle are serviced by unlocking and opening door; locked door prevents inadvertent dumping and unauthorized removal. Waste container safety-edged finger hole provides convenient grip for service. Toilet paper spindles are carried in vandal-resistant sub-frame accessible when door is opened.

Installation

- Unit is mounted in wall recess through concealed mounting holes provided. Note that top of rough wall opening is $\frac{13}{16}''$ (21mm) below top of face trim. It is the installer's responsibility to select fasteners that are appropriate for the wall or partition condition and application. For plaster or dry wall, provide in-wall backing complying with local building codes.
- For ADAAG compliance, the centerline of the TP Dispenser

should be located within 7" - 9" (178-227mm) of the front of the toilet and the TP Dispenser opening bottom should be above 15" (381mm) minimum above finished floor (AFF). An optional grab bar (not provided) at 33" - 36" (838-914mm) AFF to the top the bar should allow the service door top to clear the bottom of the bar when opening the door.



TSM 5367 Toilet Paper Dispenser & Sanitary Napkin Disposal is guaranteed against defects in workmanship and material for one year from shipping date.