

# Bathtub Combination Bars

Fastener Kits are ordered separately (see page 23).

## 1632

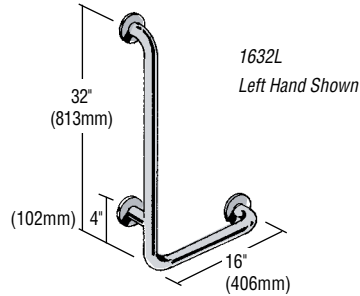
### Horizontal/Vertical Bar

Offers horizontal and vertical use in one bar. Adding the suffix "M" modifies the length of the 1632 to dimensions other than 16" x 32". When entering tub, if the bather's right hand grips the vertical, specify right hand. If reverse, specify left.

#### Standard Sizes

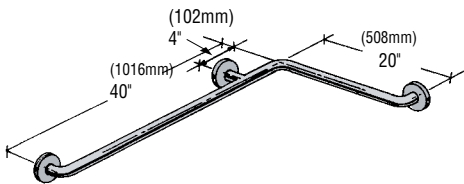
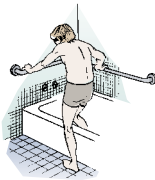
- |                                 |                                  |
|---------------------------------|----------------------------------|
| 1632M @ 12" x 24" (305 x 610mm) | 1632M @ 24" x 36" (610 x 914mm)  |
| 1632M @ 18" x 32" (457 x 813mm) | 1632M @ 24" x 48" (610 x 1219mm) |

Or create your own size: 1632M @ \_\_\_\_\_ horizontal x \_\_\_\_\_ vertical  
(List horizontal dimension first.)



## 2040

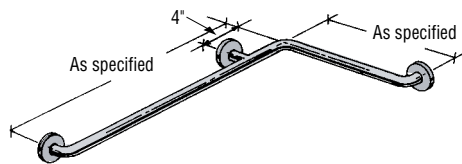
### Horizontal Corner Bar



## 2040M

### Horizontal Corner Bar

2040M same configuration as 2040 but with dimensions as noted.



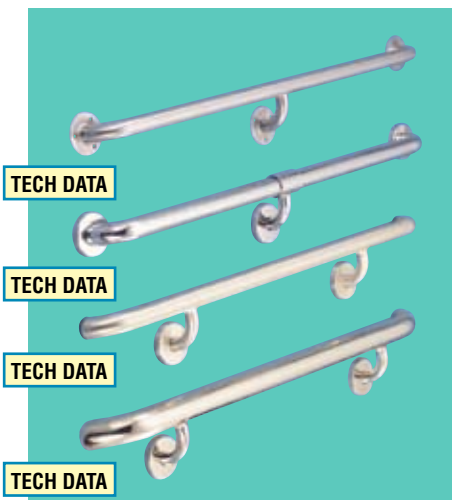
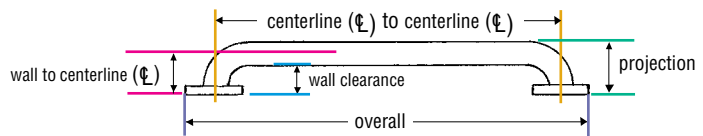
#### Standard Sizes

- 2040M @ 16" x 31" (406 x 787mm)
- 2040M @ 24" x 24" (610 x 610mm)
- 2040M @ 24" x 36" (610 x 914mm)
- 2040M @ 36" x 48" (914 x 1219mm)
- 2040M @ 36" x 52" (914 x 1321mm)
- 2040M @ 36" x 54" (914 x 1372mm)
- 2040M @ 42" x 52" (1067 x 1321mm)

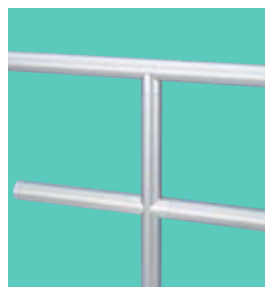
Or create your own size:  
2040M @ \_\_\_\_\_ x \_\_\_\_\_

## Custom Bars & Rails

**TSM** prides itself on fabricating custom grab bars, rails and architectural metalwork with expertise and craftsmanship, projects that range from simple grab bars/handrails to elaborate, monumental railing systems. Off-the-shelf component railing systems as well as custom fabricated projects are designed for ease of installation and worldwide shipping.



Custom Door Pull Handle formed from Bright Polished Tubing

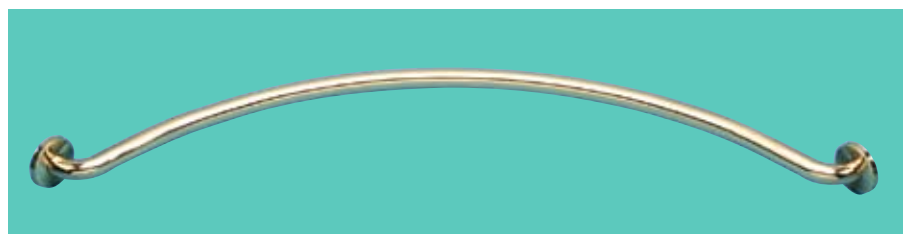


Off-the-Shelf Aluminum Component Railing System (Series 600)



Figure 4 Pool Entry Rails (Model PT-230)

TSM offers a wide range of railing systems in all sizes of stainless steel, brass, aluminum and bronze. Please request Catalog 804 featuring architectural metalwork and ornamental handrails, both in off-the-shelf systems as well as custom fabrications.



Custom Brass Grab Bar with 27" Radius and 48" Arc.